



Highly Accurate Thermographic Camera Installation and Configuration Guide



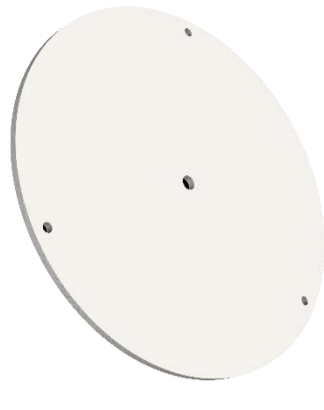
Bullet: DS-2TD2617B



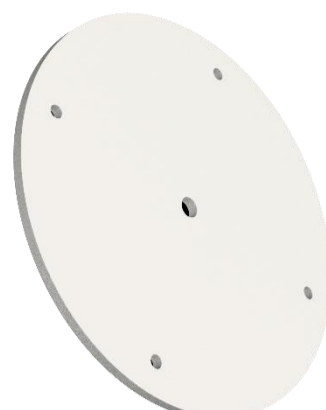
Turret: DS-2TD1217B

Temperature Measurement Range: 30°–45° C
Working Temperature: 10°–35° C
Accuracy: ±0.5° C
Resolution: 160 × 120

1 Installation—Quick Temporary Tripod Deployment



Tripod Adapter for Turret



Tripod Adapter for Bullet



A. Attach tripod connector to the adapter



B. Affix the adapter to the camera



C. Install the camera on the tripod



D. Installation complete

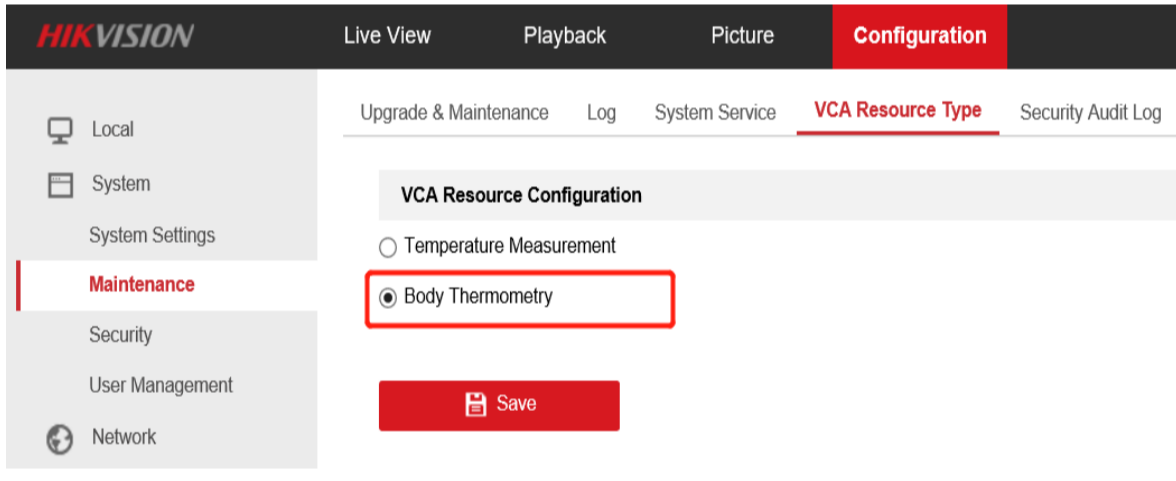
Installation Parameter Recommended

Model	Distance (between human and camera)
DS-2TD1217B-3/PA	0.8 m–1.5 m
DS-2TD2617B-6/PA	1.5 m–3 m

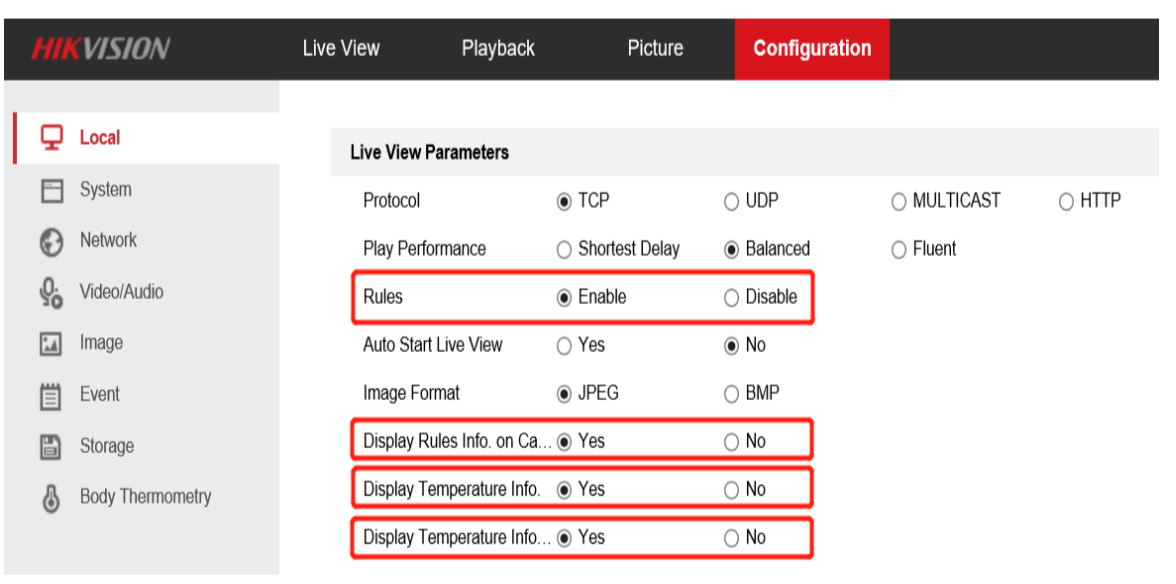
Model	Height	Elevation Angle
DS-2TD1217B-3/PA	1.5 m	≤20°
DS-2TD2617B-6/PA		

2 Configuration

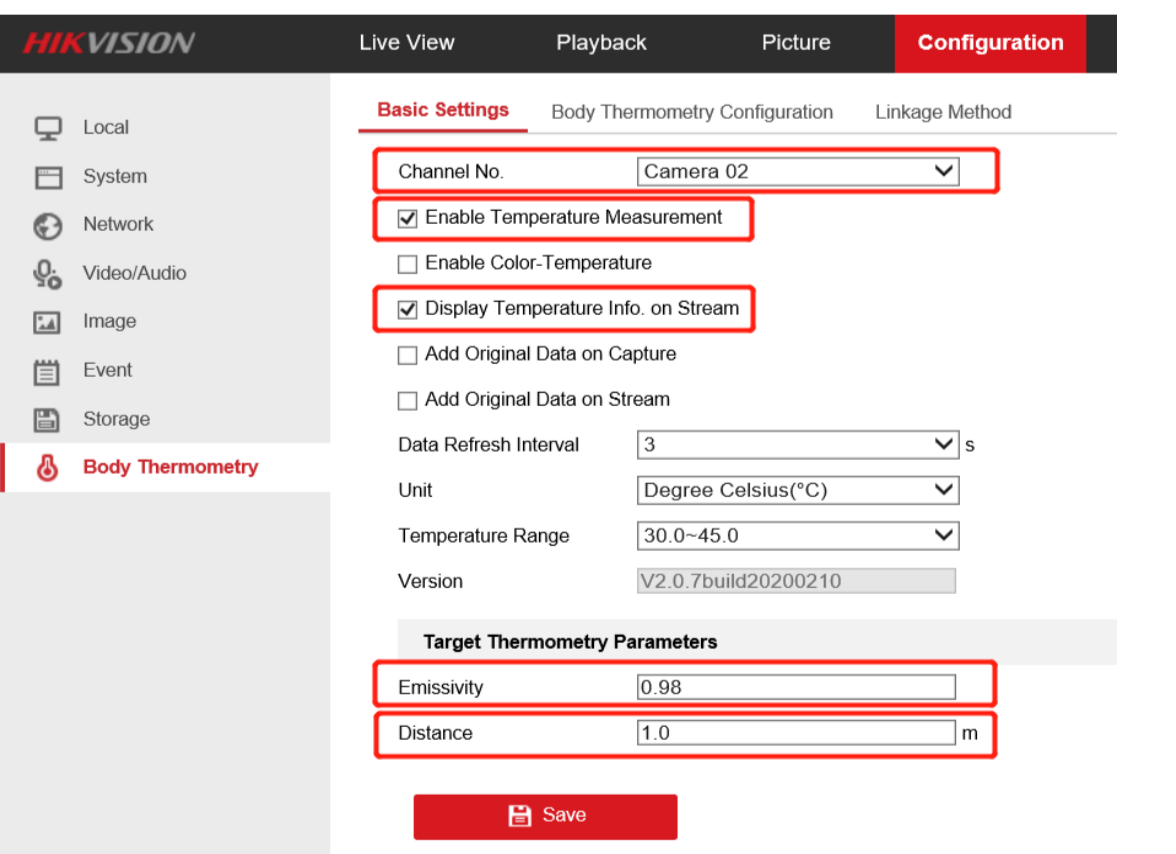
1. Select **Body Thermometry** as VCA Resource Type.



2. Go to Local Configuration interface, enable and save the following settings:

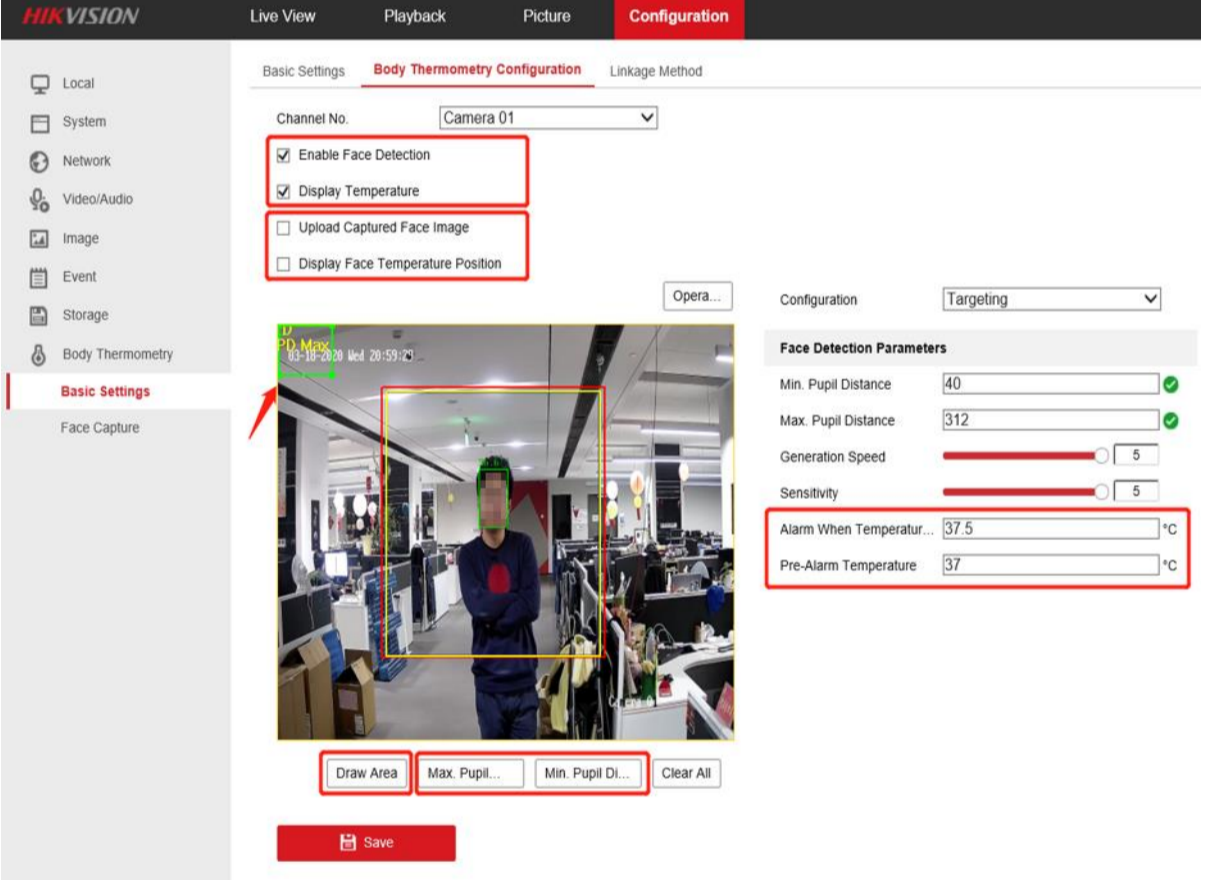


3. Go to Body Thermometry **Basic Settings**. Configure and save the following settings:

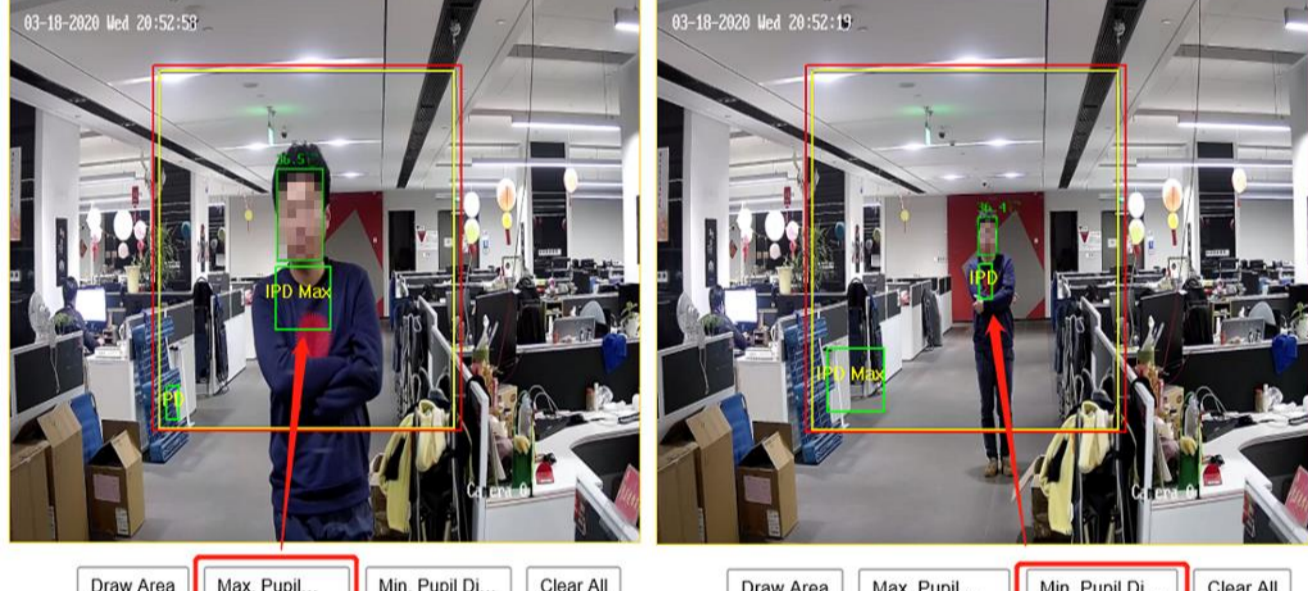


Emissivity: For human skin, this value is normally set as 0.98.
Distance: The actual distance between the camera and human.

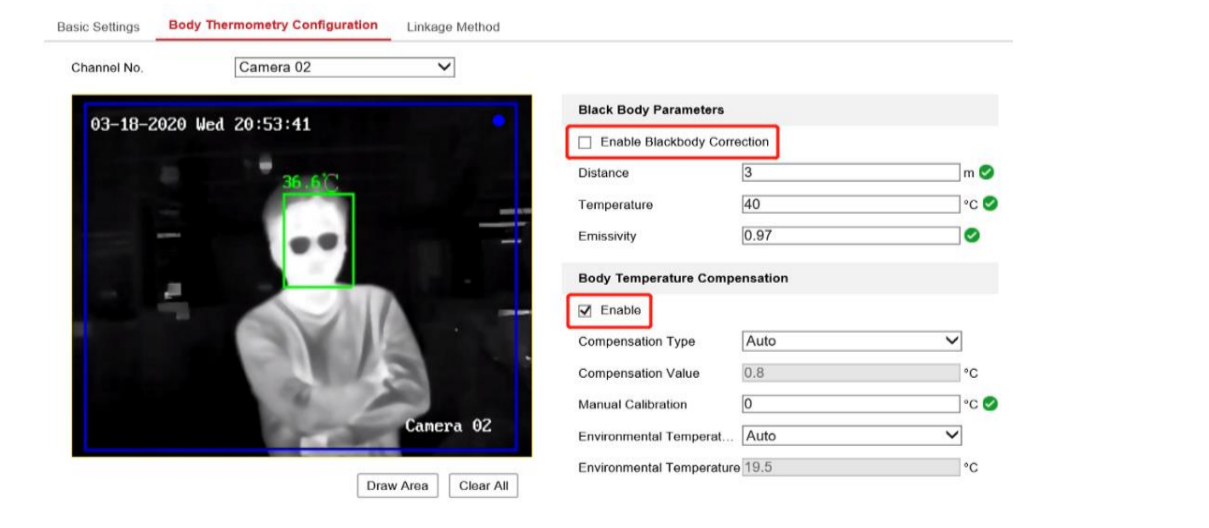
4. Configure **Camera 01 (Optical)** Settings.



Check **Enable Face Detection** and **Display Temperature**. **Suggest uncheck Upload Captured Face Image** and **Display Face Temperature Position** if they are not required. Set **Alarm Temp.** and **Pre-alarm Temp.** Press **Draw Area** to adjust face detection region. Click **Max. Pupil Distance** and **Min. Pupil Distance** to draw width filter frame, Max and Min distance refer to camera detection distance.



5. Configure **Camera 02 (Thermal)** Settings.



Uncheck **Enable Blackbody Correction** if no blackbody is used. Check **Enable of Body Temperature Compensation** and keep parameters as default.

3 Advice

The environment can easily influence the thermal camera's performance. Therefore, it is required to be used in a stable indoor environment without wind, and the ambient temperature should be consistent. Here's some advice:

1. Set up a one-way screening zone, and ensure that camera can clearly see the face of person whose skin-surface temperature is being measured.
2. Avoid backgrounds that are too crowded or bright.
3. Wait 30 minutes after turning on the camera before taking skin-surface temperature measurements, because the camera needs to stabilize.
4. If there is a large gap between indoor and outdoor temperatures, it is highly suggested to wait more than five minutes before measuring the skin-surface temperature of people who just got in.
5. Follow the guidance of required temperature measurement distance.